

Figure 210-28. Space requirements and dimensions of tractor trailers and selected large vehicles.

Vehicle Height	
Maximum Allowable	
Total Height	State
4 115 mm (13'-6")	In all states except those listed below
3 960 mm (13'-0")	FL
4 265 mm (14'-0")	CA, ID, ME, NV, ND, OR, UT, WA, WY
4 420 mm (14'-6")	CO, NB

Average SemiTrailer Dimensions				
	Length (L)			
	8 230 mm (27'-0")	12 190 mm (40'-0")	13 715 mm (45'-0")	Refrigerator 12 190 mm (40'-0")
Floor Height (FH)	1 270 mm (4'-2")	1 270 mm (4'-2")	1 270 mm (4'-2")	1 450 mm (4'-9")
Rear Axle (RA)	915 mm (3'-0")	1 575 mm (5'-2")	1 780 mm (5'-10")	1 345 mm (4'-5")
Landing Gear (LG)	5 790 mm (19'-0")	9 145 mm (30'-0")	10 515 mm (34'-6")	8 965 mm (29'-5")

Average Dimensions of Vehicles			
	Type of Vehicles		
	Double Semitrailer	Conventional Semitrailer	Straight Body Truck
Length (L)	21 335 mm (70'-0")	16 765 mm (55'-0")	5 180 mm to 12 190 mm (17'-0" to 40'-0")
Width (W)	2 440 mm (8'-0")	2 440 mm (8'-0")	2 440 mm (8'-0")
Height (H)	4 115 mm (13'-6")	4 115 mm (13'-6")	4 115 mm (13'-6")
Floor Height (FH)	1 220 mm to 1 370 mm (4'-0" to 4'-6")	1 220 mm to 1 320 mm (4'-0" to 4'-4")	915 mm to 1 220 mm (3'-0" to 4'-0")
Track (T)	1 980 mm (6'-6")	1 980 mm (6'-6")	1 780 mm (5'-10")
Rear Axle (RA)	915 mm to 1 220 mm (3'-0" to 4'-0")	1 220 mm to 3 660 mm (4'-0" to 12'-0")	685 mm to 3 660 mm (2'-3" to 12'-0")

Large Vehicle Dimensions				
Vehicle	(L) Length	(W) Width	(H) Height	(OR) Overhang Rear
Intercity Bus	13 715 (45'-0")	2 745 (9'-0")	2 745 (9'-0")	3 075 (10'-1")
City Bus	12 190 (40'-0")	2 590 (8'-6")	2 590 (8'-6")	2 440 (8'-0")
School Bus	12 040 (39'-6")	2 440 (8'-0")	2 590 (8'-6")	3 860 (12'-8")
Ambulance	6 355 (20'-10.25")	2 110 (6'-11")	3 050 (10'-0")	1 625 (5'-4")
Paramedic Van	6 555 (21'-6")	2 440 (8'-0")	1 980 (6'-6")	1 220 (4'-0")
Hearse	5 995 (19'-8")	2 030 (6'-8")	2 820 (9'-3")	1 625 (5'-4")
Airport Limousine	6 850 (22'-5.75")	1 930 (6'-4")	1 525 (5'-0")	1 195 (3'-11")
Trash Truck	8 585 (28'-2")	2 440 (8'-0")	3 355 (11'-0")	1 830 (6'-0")
Delivery Truck	8 000 (26'-3")	2 415 (7'-11")	3 250 (10'-8")	2 565 (8'-5")
Fire Truck	9 755 (32'-0")	2 440 (8'-0")	2 945 (9'-8")	3 050 (10'-0")

\* Exact sizes of large vehicles may vary

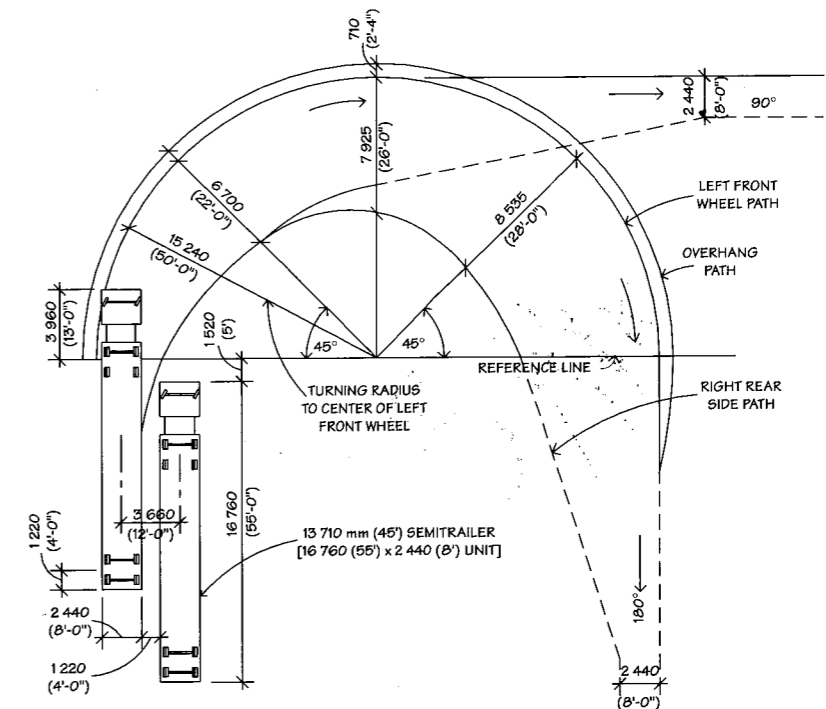


Figure 210-29. Turning radii for buses and semitrailers.

210 Spatial Standards

210 Spatial Standards